

May 2026 - Sunday Stamper Projects

Cardsandcraftswithkaren.com
Karen Thomas, Independent Stampin' Up! Demonstrator



Featured products:

- May 2026 Product of the Month – Berry Botanical Vellum Specialty DSP - #167985 - \$5.00
 - Silly Old Bear Suite - #167634 (On-Line Exclusive) - \$130.00
 - Scenic Coast Suite Collection - #167786 - \$91.25
 - Phrases & Frames Impressions Dies - #167586 - \$34.00
 - Impression Plate - #167767 - \$11.00

Scenic Coast Card (left):

- Thick Basic White card stock base – 5 ½” x 10 ¾”, score on the 10 ¾” side at 4 ¼” and 8 ½”
- Scenic Coast Designer Series Paper (DSP) – 4” x 5 ¼” and 2” x 5 ¼”
- Adhere 4” x 5 ¼” piece of DSP to the card front, make sure adhesive is all over as you will be die cutting a circle out of the middle of the card front and need the two layers to stick together.
- The 2” x 5 ¼” piece of DSP is adhered to the right-side fold of the card front. Make sure to double check orientation so you do not accidentally adhere upside down (ask me how I know).
- Using a piece of card stock 3 ½” x 3 ½” in an accent color to die cut largest circle from the Stylish Shapes Die. Use that die cut and cut either lighthouse, sailboat, or sunbeam out. Adhere die cut piece to the circle you die cut from the card front.
- Close card and adhere die cut piece inside the die cut circle on the right-hand side (see photo at the end of project sheet).
- Add greetings and embellishments of your choice.

Karen Thomas, Stampin' Up! Demonstrator

www.cardsandcraftswithkaren.com

724-816-5718

kthomas309@zoominternet.net

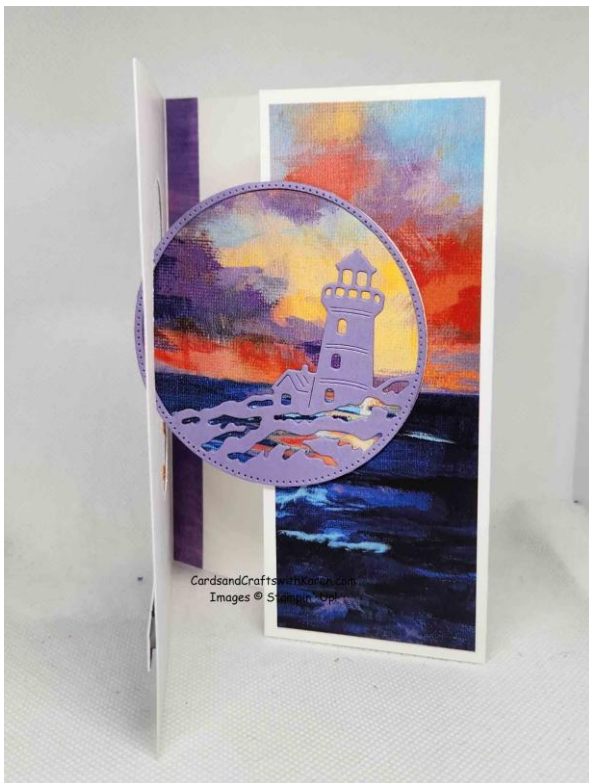
Silly Bear Card (right):

- Very Vanilla card stock base – 5 ½” x 8 ½”, score at 4 ¼”
- Old Olive card stock – 4” x 5 ¼”, run through the Hundred Acre Woods 3D Embossing Folder, adhere directly to card front.
- Die cut image from the Silly Old Bear Designer Series Paper with coordinating die from the Sweet Words Bundle
- Hydrangea Hue card stock used for coordinating mat. Adhere this layer with Stampin’ Dimensionals.
- Add greeting of your choice and 2026-2028 In-Color Dots as embellishments.

Berry Botanical Vellum Card (middle):

- Basic White card stock base 5 ½” x 8 ½”, scored at 4 ¼.”
- Berry Botanical Vellum – 4” x 5 ¼”, adhere to card front using Tear & Tape
- Phrases & Frames Impressions Bundle used for frames and greeting.
- Addition purchase of the Impression Plate (it’s soft and spongy) needed for the added depth of detail in the die cut.
- This is a 2-step process, first you die cut the frame, then leave the card stock in the frame, follow the recommended sandwich with the Impression Plate for a detailed image.

Scenic Fun Fold Card side view:



Karen Thomas, Stampin’ Up! Demonstrator

www.cardsandcraftswithkaren.com

724-816-5718

kthomas309@zoominternet.net

Silly Bear Cards:



Karen Thomas, Stampin' Up! Demonstrator

www.cardsandcraftswithkaren.com

724-816-5718

kthomas309@zoominternet.net