

## Christmas in October 2020

Cardsandcraftswithkaren.com  
Karen Thomas, Stampin' Up! Demonstrator



*This month I am featuring products from the **Snowflake Splendor Suite**:*

- Snowflake Splendor Designer Series Paper - #153512 - \$11.50 (on sale in Oct20 for \$9.78)
- Snowflake Wishes Bundle - #155172 - \$55.75
  - Snowflake Wishes Stamp Set (17 photopolymer stamps)
  - So Many Snowflakes Dies (8 dies)
- Winter Snow Embossing Folder - #153577 - \$7.50
- Balmy Blue Glimmer Paper - #153513 - \$5.00
- Blue Adhesive-Backed Gems - #153547 - \$8.00
- Snowflake Splendor ¼" Ribbon - #153548 - \$7.00

From Karen Thomas, your Stampin' Up! Demonstrator

[www.cardsandcraftswithkaren.com](http://www.cardsandcraftswithkaren.com)

724-816-5718

[kthomas309@zoominternet.net](mailto:kthomas309@zoominternet.net)

### ***Snowflake Shaker Card:***

- Purple Posy card stock base – 4 ¼" x 11", scored at 5 ½"
- Thick Whisper White card stock – 3 ¾" x 5", die cut the window image from So Many Snowflake Dies, then run through die cut machine using the Winter Snow Embossing Folder
- Cut a piece of window sheet 3 ½" x 4 ¾" and adhere using Tear & Tape to the back side of the Whisper White
- Add adhesive strips around the outside edges of window sheet and to create a well to hold sequins (Snowflake Sequins - #150443 - \$6)
- Night of Navy card stock mat – 4" x 5 ¼"
  - Cut piece of Designer Series Paper 3 ½" x 4 ¾", add to Night of Navy
- On the designer series paper unit, put some sequins in the center, then add the Whisper white unit to create the shaker portion of the card. Adhere to the card front
- Add Balmy Blue Glimmer Paper snowflake and greeting stamped in Night of Navy
- Embellish with Blue Adhesive-Backed Gems
- Stamp sentiment and a few snowflakes on the inside

### ***Sparkle Snowflake Card:***

- Thick Whisper White card stock base – 4 ¼" x 11", scored at 5 ½"
- Balmy Blue Glimmer Paper – 4" x 5 ¼"
- Thick Whisper White card stock – 3 7/8" x 5 1/8"
  - Stamp greeting just a little under center
  - Use the largest Snowflake die and cut out two snowflakes at opposite ends
  - I found it easier to stamp greeting then die cut to make sure enough room for the greeting
  - Add Stampin' Dimensionals or use pieces of Foam Adhesive sheets (#152815 - \$8)
- Embellish with Blue Adhesive-Backed Gems

### ***Hanukkah Card:***

- Night of Navy card stock base – 4 ¼" x 11", scored at 5 ½"
- Night of Navy mat – 3 7/8" x 5 1/8"
- Designer Series paper – 3 ¾" x 5"
- Stamp greeting on Whisper White card stock, then cut to a thin strip, add strip to Night of Navy card stock, adhere to card using Mini Stampin' Dimensionals
- Add Basic Pearl Embellishments to center of the snowflakes
- This designer works for any designer series paper, just add the greeting of your choice!

### ***Fold Flat Designer Box (finished size – 4 ½" x 8" and 2" deep):***

- Start with 2 pieces of card stock 8 ½" x 11"
- Score 8 ½" side at 2" and 6 ½"
- Score 11" side at 8" and 10"
- Fold and burnish all score lines, cut away sections highlighted in diagram, cut on score lines as noted
- Adhere the 2 pieces together, rounding corners on flaps if desired using the Detailed Trio Punch (#145320 - \$20)
- Designer Series paper for front, back and sides
  - Front & back = 4 ¼" x 7 ¾"
  - Sides = 1 ¾" x 7 ¾"
- I have decorated the front with Scalloped Rectangles from the Stitched So Sweetly Dies along with stamps and dies from the Snowflake Wishes Bundle
- This box will fold flat until you fold it together at the ends

From Karen Thomas, your Stampin' Up! Demonstrator

[www.cardsandcraftswithkaren.com](http://www.cardsandcraftswithkaren.com)

724-816-5718

[kthomas309@zoominternet.net](mailto:kthomas309@zoominternet.net)

### **Lip Balm Holder:**

- Designer Series Paper - 4 ¼" x 4 ¼"
- Score one side at ¾", turn 180 degrees and score again at ¾"
- Score the other side at 1" and 1 ¾", turn 180 and score again at 1" and 1 ¾"
- Fold and burnish all score lines, cut away sections highlighted in diagram, cut on score lines as noted
- Adhere tabs together to form holder, add lip balm
- For my closure I am using a Mini clip from my stash, add a bow for decoration

### **Bath & Body Works Hand Sanitizer Holder:**

- Card stock base – 4" x 8 ½"
  - Score 4" side at 1" on both ends
  - Score 8 ½" side at 3" - 4" - 7" - 8"
- Designer Series Paper:
  - Front & Back – 1 7/8" x 2 7/8" (cut 2)
  - Sides – 7/8" x 2 7/8" (cut 2)
  - Front/Back – 7/8" x 1 7/8" (cut 2)
- Fold and burnish all score lines, cut away sections highlighted in diagram, cut on score lines as noted
- Diagram also has the sections designer series paper should be add to
- When adhering, first glue middle tabs to the front, then adhere front tabs to the back
- Decorate with Snowflakes, I have also added some Iridescent Pearls (#153549 - \$7.50)

### **Milk Carton Holder:**

- Card stock base – 6" x 10 ½"
  - Score 6" side at ½" – 2" – 4"
  - Score 10 ½" at 2" – 5" – 7" – 10"
- Designer Series Paper:
  - 2 ¾" x 1 ¾" – cut 2 for front/back bottom portion
  - 2 ¾" x 1 ¼" – cut 2 for front/back top portion
  - 1 ¾" x 1 ¾" – cut 2 for sides
- Tag is from Trio of Tags die (#150667 - \$16) and greeting from the Gift Wrapped Bundle #155155 - \$31.50, the Gift Wrapped stamp set and Gift Bow Builder Punch. Tuck the tag under the bow with a glue dot to make it look like it is tied on it.
- Fold and burnish all score lines, cut away sections highlighted in diagram, cut on score lines as noted
- Use a hole punch and punch two holes to thread ribbon through and die a bow in the front
- Decorate with Snowflakes, I have also added some Iridescent Pearls (#153549 - \$7.50)

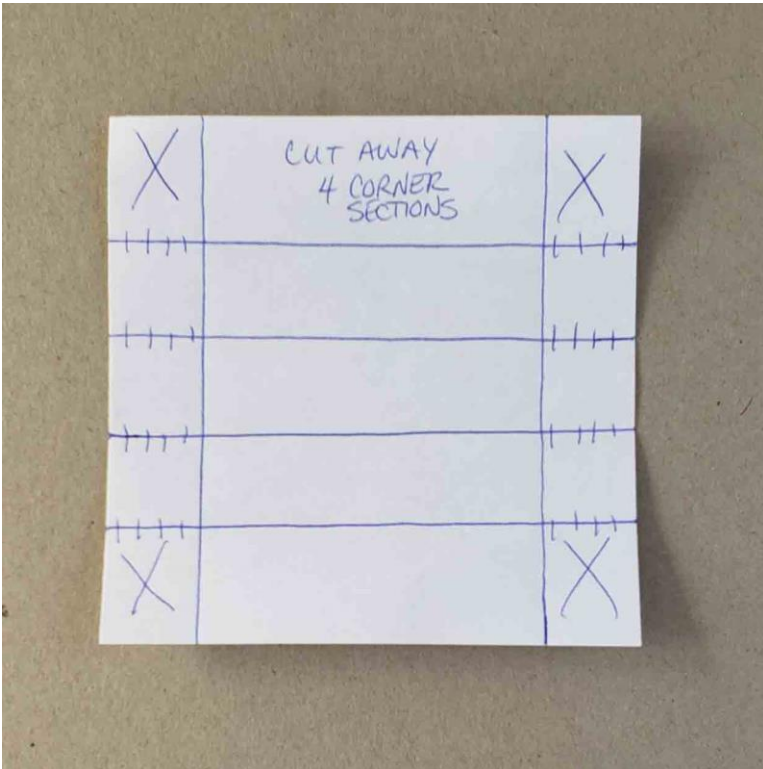
From Karen Thomas, your Stampin' Up! Demonstrator

[www.cardsandcraftswithkaren.com](http://www.cardsandcraftswithkaren.com)

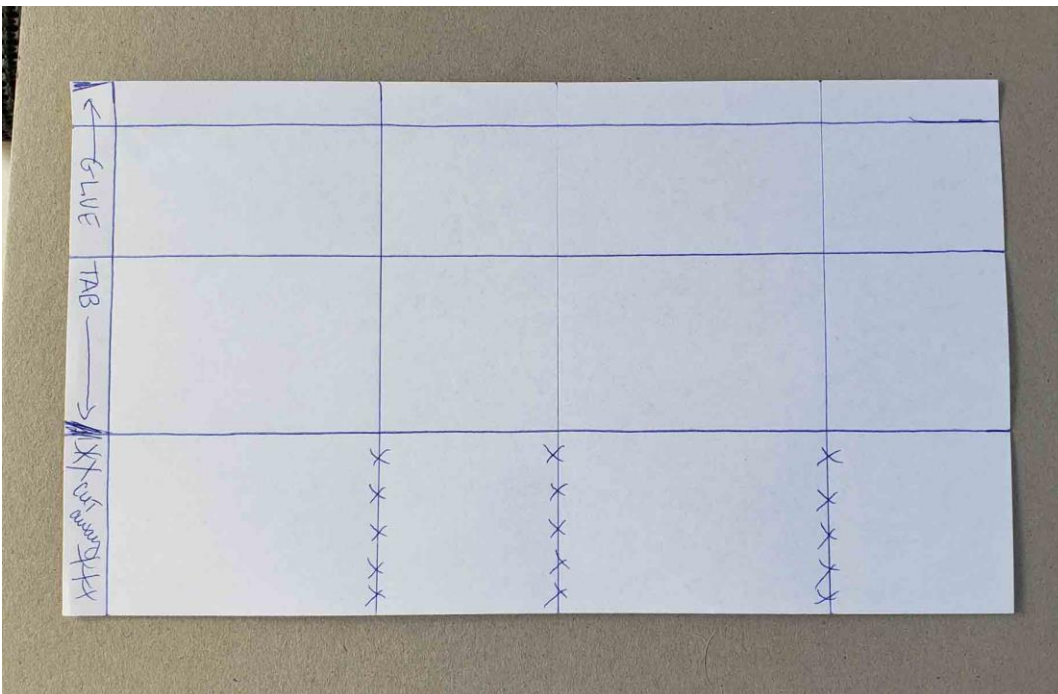
724-816-5718

[kthomas309@zoominternet.net](mailto:kthomas309@zoominternet.net)

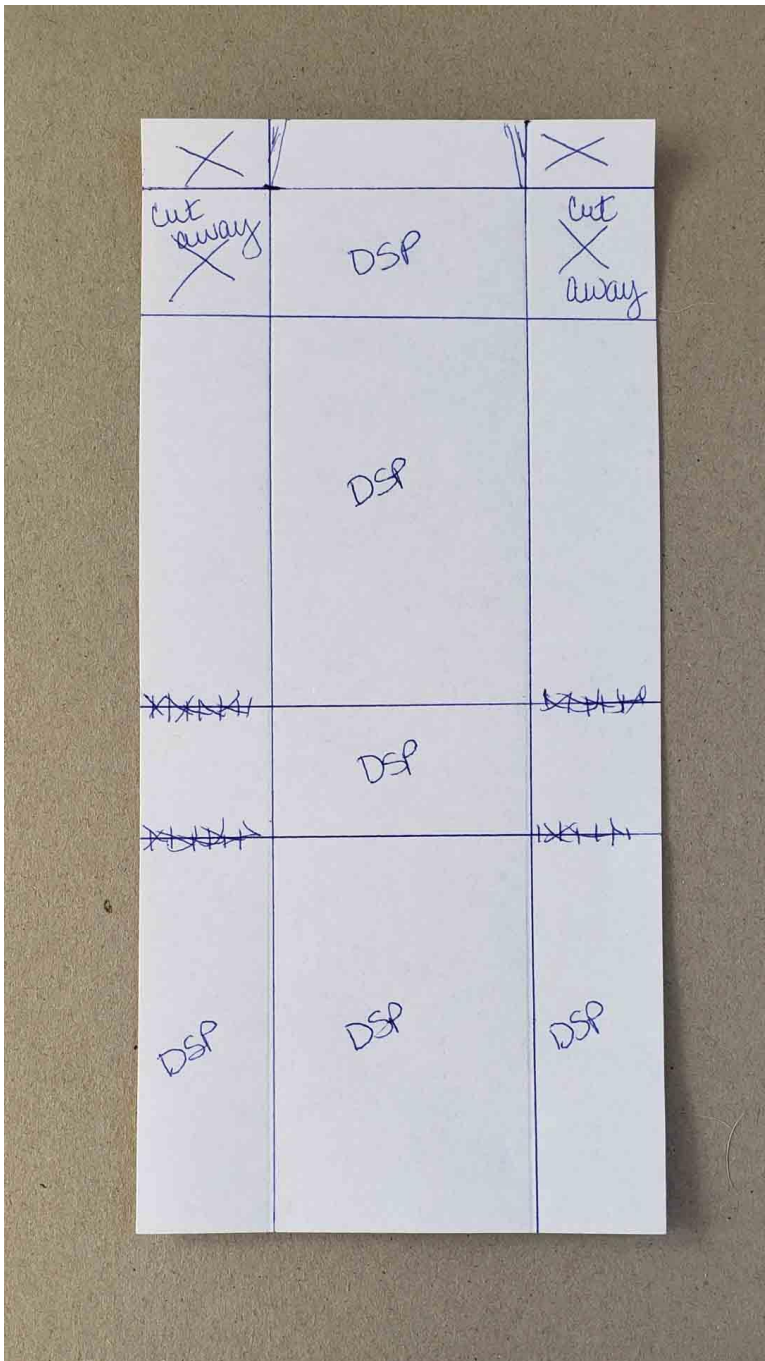
**LIP BALM HOLDER TEMPLATE:**



**MILK BOX TEMPLATE:**



**HAND SANITIZER HOLDER TEMPLATE:**



**FLAT FOLDING BOX:**

