

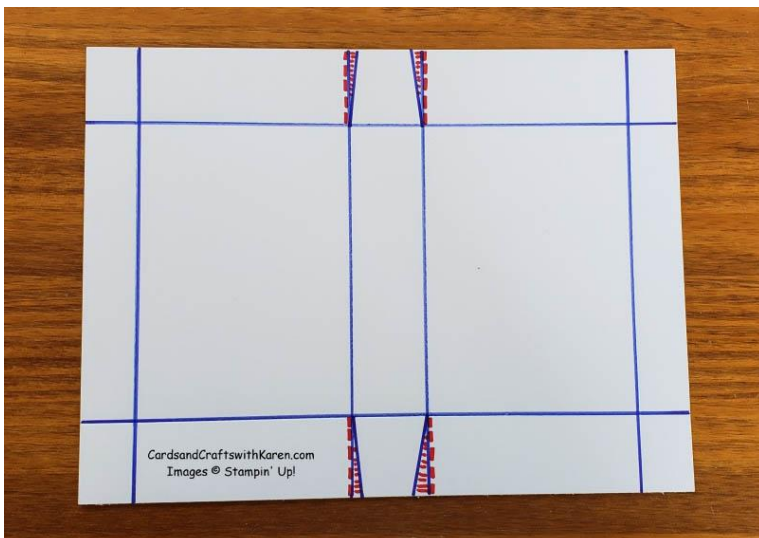


Christmas Purse template with instructions:



Below is the template and instructions on how to put the purse together.

- 1) Start with a piece of 12" x 12" designer series paper cut down to 9" x 12"
 - Score 9" side 1 1/2" from both ends
 - Score 12" side – 1", 5 1/4", 6 3/4" and 11"
 - Fold and burnish all score lines
 - Where the red dashes are cut to the fold and miter tabs for easier folding



- 2) This is what the inside of the purse base looks like (I've made pen marks to accent the center folds and show the tabs once the tab sides are mitered).



- 3) The 1" and 11" scores are folded to the outside to create the border on the purse base.



- 4) Fold up the sides and secure the tabs to the inside of one half:



- 5) Bring the front to the back and secure sides – your purse base is now complete



- 6) Handles are made from the remaining 3" x 12" piece of designer series paper. Cut the paper into 2 strips each 1 1/2" x 12", scored on the 1 1/2" side at 3/4", fold, burnish and glue closed. Add one strip to the front and back to create the hands. I prefer to use Tear 'n Tape or another strong adhesive to adhere the handles.